

Stretch Adult Diaper Analysis

A). Client's diaper Performance Analysis

Diaper Overview

Diaper Overview



M



L/XL



XXL

Performance of each size

NO	TEST ITEM (测试项目)	Adult diaper (Purple)	Adult diaper (Yellow)	Adult diaper (Blue)
1	Size (产品尺码)	M	L/XL	XXL
2	Product construction (产品结构)	Clothlike film	Clothlike film	Clothlike film
3	Length * Width (全长*全宽)	835*540mm	910*550mm	1000*880mm
4	Absorbent core type (芯体类型)	SAP+wood pulp		
5	Topsheet material (面层材料)	Spunbound nonwoven fabric		
6	backsheet material (底层材料)	Spunbound nonwoven fabric		
7	ADL (导流层)	240*95mm	240*95mm	255*90mm
8	Total weight /g (条质量/g)	82.13	99.13	97.27
9	Rewet/g (回渗)	0.6	1.01	1.55
10	Full Absorbency/ ml (饱和吸收量)	1197	1400	1370
11	Retention Absorbency /ml (保水量)	514	600	600
12	Wetness Indicator/mm (尿显)	280	330	330

A). Client's Diaper Structure analysis

Component material Overview

Size M



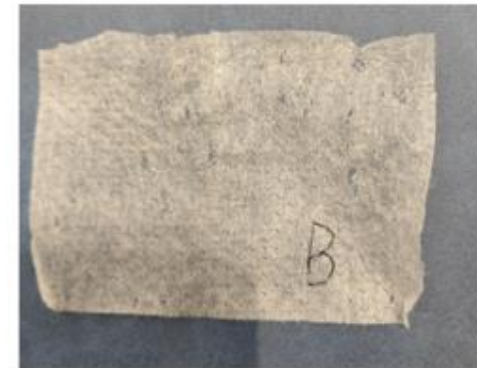
White Topsheet layer



White ADL-
Acquisition Distribution layer



Absorbent Core -
Wood pulp+SAP



White backsheet layer

A). Client's Diaper Structure analysis

Component material Overview

Size M



Purple PE film



Wetness Indicator Glue



Front Ear Tape
Non-woven fabric
Non-elastic

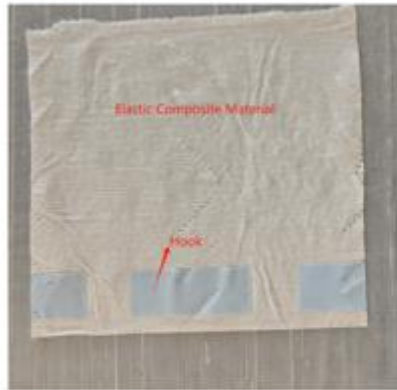


Back Ear Tape
Non-woven fabric
Non-elastic

A). Client's Diaper Structure analysis

Component material Overview

Size M



Velcro/ Magic tape
Elastic composite material+hook



Leakage guard
Non-woven fabric

A). Client's Diaper Structure analysis

Component material Overview

Size L/XL



White Topsheet layer



White ADL-
Acquisition Distribution layer



Absorbent Core -
Wood pulp+SAP



White backsheet layer

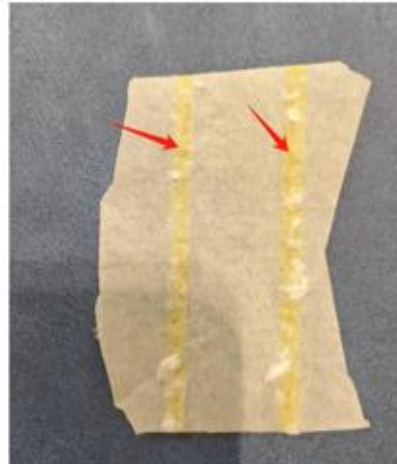
A). Client's Diaper Structure analysis

Component material Overview

Size L/XL



Yellow PE film



Wetness Indicator Glue



Front Ear Tape
Non-woven fabric
Non-elastic

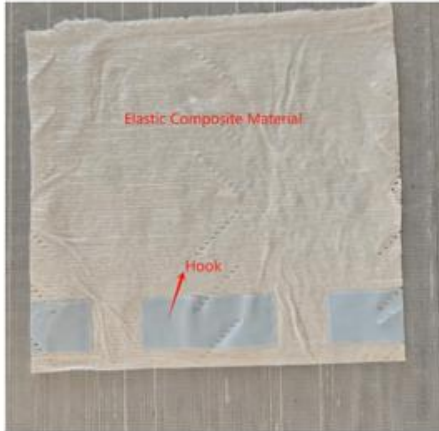


Back Ear Tape
Non-woven fabric
Non-elastic

A). Client's Diaper Structure analysis

Component material Overview

Size L/XL



Velcro/ Magic tape
Elastic composite
material+hook



Leakage guard
Non-woven fabric

3. Main Differences

A. Full Length * Full Width

Sizes	Client's	Our Proposal
M	830mm x 540mm	835mm x 540mm
L/XL	910mm x 550mm	910mm x 550mm
XXL	1000mm x 880mm	1000mm x 850mm

3. Main Differences

B. Absorbent core shape



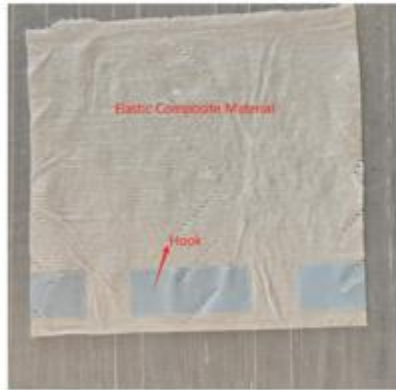
Client's



Our Proposal

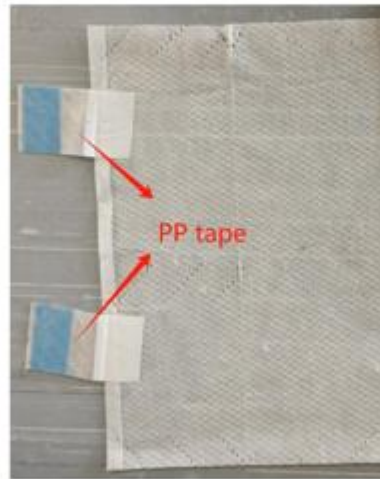
3. Main Differences

C. Velcro/ Magic tape

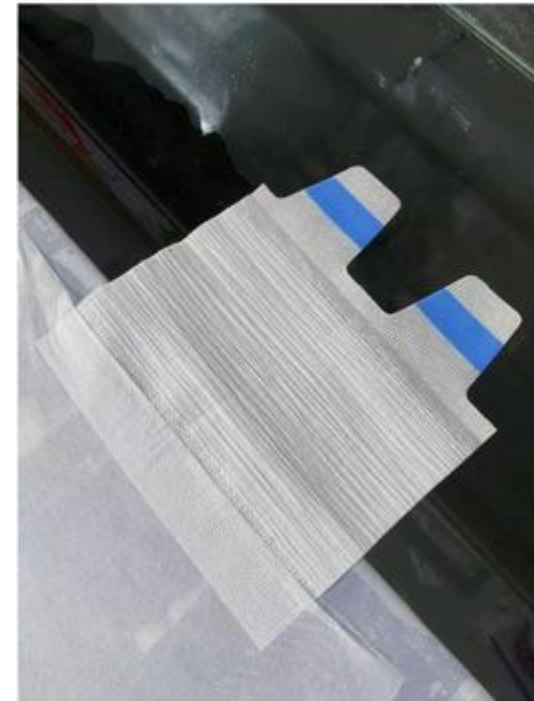


M and L/XL

Client's



XXL



Our Proposal

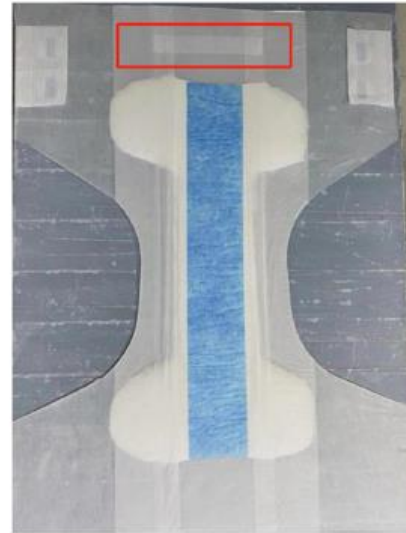
3. Main Differences

C. Elastic waistband



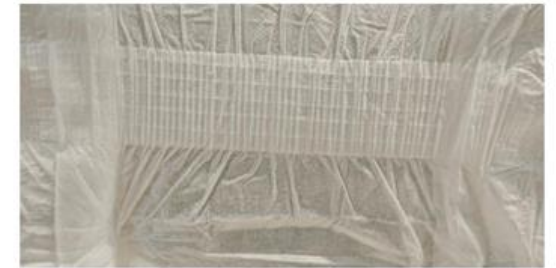
Without

Client's



With

Our Proposal



4. Proposal

Size	Waist (mm)	Unit Weight (g)	SAP (g)	Full Absorbency (g)
M	130-160	85	12	1200
L/XL	140-180	95	14	1400
XXL	160-200	100	16	1600

Main Material:

1. Topsheet: 15gsm spunbound non-woven fabric;
2. 35gsm ADL
3. Absorbent core : sap+ fluff pulp
4. Front ear tape + back ear tape & S shape magic tape
5. Colored PE film
6. Backsheet: 15gsm spunbound non-woven fabric
7. Package: Clear Bag with pasted stickers, similiar way as the left pic



5. Test Result of Sample (L/XL)

Stretch Adult Diaper Test report (检测报告)			
NO	TEST ITEM (测试项目)	Adult diaper (Yellow)	Adult diaper Our Proposal
1	Size (产品尺码)	L/XL	L/XL
2	Product construction (产品结构)	Clothlike film	Clothlike film
3	Length * Width (全长*全宽)	910*550	910*550
4	Absorbent core type (芯体类型)	SAP+wood pulp	SAP+wood pulp
5	size of Absorbent core (长*宽)	680*240	760*300/350
6	Topsheet material (面层材料)	Spunbound nonwoven fabric	Spunbound nonwoven fabric
7	backsheet material (底层材料)	Spunbound nonwoven fabric	Spunbound nonwoven fabric
8	waistband (腰围情况)	No	Yes
9	Frontal tape (前腰贴)	No	No
10	ADL (导流层)	Yes	Yes
11	Total weight /g (条质量/g)	99.13	95
12	Wetness Indicator/mm (尿显)	330	330